

NUDURA 12" (305mm)  
STANDARD FORM UNIT

WET SET DOWELS TO MATCH  
VERTICAL REINFORCEMENT  
BETWEEN POUR OR AS  
SPECIFIED

V-CLIP WALL PANEL ANCHOR

TREMCO EXOAIR 230 OR  
FUNCTIONAL EQUIVALENT

BRICK VENEER c/w  
1" (25mm) AIR SPACE AND  
BRICK TIES

FORM PANELS c/w INSERT  
WEBS- CUT TO SUIT FLOOR  
CONNECTION- ADDITIONAL  
FORM SUPPORT AS  
REQUIRED

HORIZ/VERT REINFORCEMENT  
AS PER CODE OR AS  
SPECIFIED (SEE NOTE 1)

MIN. 1/2" (13mm) GYPSUM  
BOARD

FINISHED CONCRETE  
TOPPING

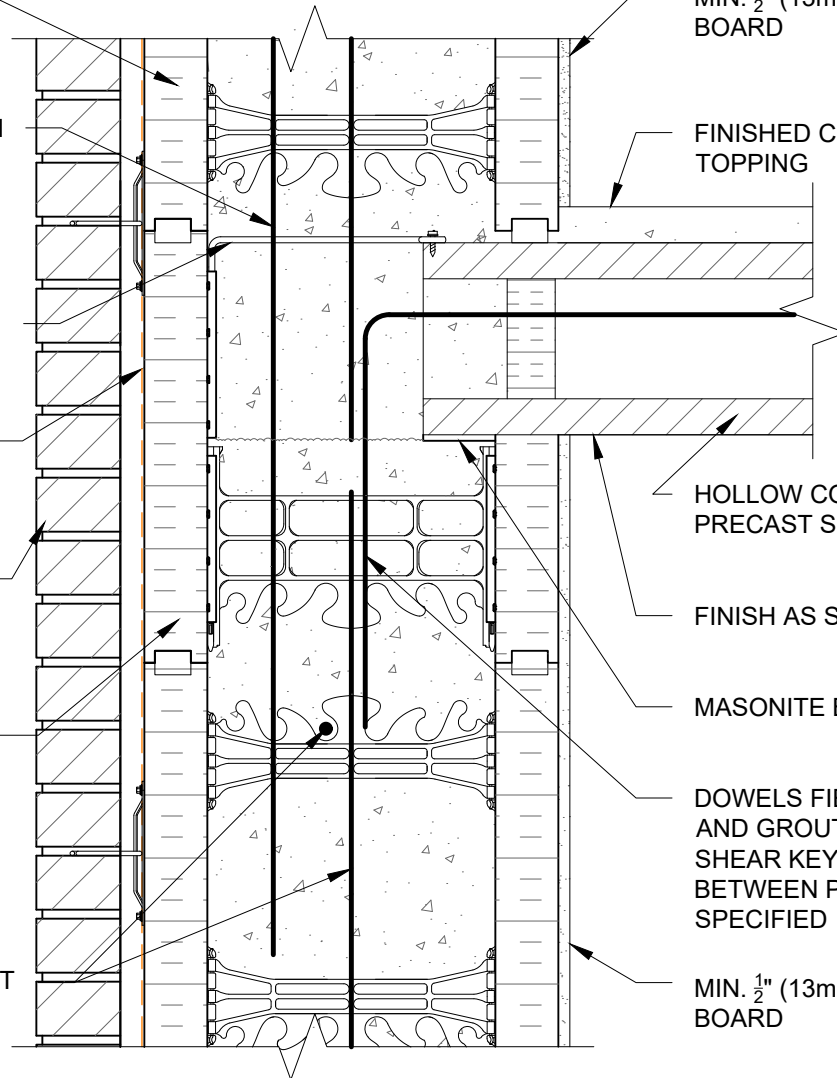
HOLLOW CORE  
PRECAST SLAB

FINISH AS SPECIFIED

MASONITE BEARING PAD

DOWELS FIELD BENT  
AND GROUTED INTO  
SHEAR KEY JOINT  
BETWEEN PANELS AS  
SPECIFIED

MIN. 1/2" (13mm) GYPSUM  
BOARD



NOTES:  
1) FOR OPTIMAL REINFORCEMENT PLACEMENT IN THE NUDURA FORM,  
SPACING OF HORIZONTAL REINFORCEMENT TO BE SPECIFIED AT 18"  
(457mm) O.C. AND VERTICAL REINFORCEMENT TO BE SPECIFIED AT  
MULTIPLES OF 8" (203mm) O.C. REFER TO NUDURA REINFORCEMENT  
PLACEMENT DETAILS.

*This detail is for general informational purposes only. The project design professional determines, in its sole discretion, whether this detail or a functionally equivalent detail is best suited for the project with respect to any architecture, engineering, and design requirements, including any local building code requirements. If this document is not reviewed and the product is not approved for use by a licensed design professional, the customer agrees that the detail may contain substantive flaws requiring correction, and hereby releases Tremco CPG Inc. from any and all liability related to the design and installation of the product. This detail is subject to change without notice. Contact Tremco to ensure you have the most recent version.*

**Non-Combustible Construction - Intermediate Floor**

Detail: Nudura 12" (305mm) Form Unit, Hollow Core Precast Slab, Intermediate Floor  
Connection, Exterior Bearing Wall Detail, Brick Veneer Finish

Drawn by: TVC

Checked by: KS

Scale: 1:8

Revision #: 04

Revised by: KAB

Date: 3/13/2024

File Name:

D12A04



Nudura Technical Support: 866-468-6299  
International: +1 705-726-9499

www.tremcocpg.com



Construction Products Group

NUDURA 12" (305mm)  
STANDARD FORM UNIT

TREMCO EXOAIR 230 OR  
FUNCTIONAL EQUIVALENT

V-CLIP WALL PANEL ANCHOR

DOWELS BENT AND GROUTED  
INTO HOLLOW CORE  
PRECAST PANELS AS  
SPECIFIED

BRICK VENEER c/w  
1" (25mm) AIR SPACE AND  
BRICK TIES

FORM PANELS c/w INSERT  
WEBS- CUT TO SUIT FLOOR  
CONNECTION- ADDITIONAL  
FORM SUPPORT AS  
REQUIRED

HORIZ/VERT REINFORCEMENT  
AS PER CODE OR AS SPECIFIED  
(SEE NOTE 1)

MIN. 1/2" (13mm) GYPSUM  
BOARD

FINISHED CONCRETE  
TOPPING

HOLLOW CORE  
PRECAST SLAB

FINISH AS SPECIFIED

WET SET DOWELS TO  
MATCH VERTICAL  
REINFORCEMENT  
BETWEEN POUR OR AS  
SPECIFIED

MIN. 1/2" (13mm) GYPSUM  
BOARD

NOTES:  
1) FOR OPTIMAL REINFORCEMENT PLACEMENT IN THE NUDURA FORM,  
SPACING OF HORIZONTAL REINFORCEMENT TO BE SPECIFIED AT 18"  
(457mm) O.C. AND VERTICAL REINFORCEMENT TO BE SPECIFIED AT  
MULTIPLES OF 8" (203mm) O.C. REFER TO NUDURA REINFORCEMENT  
PLACEMENT DETAILS.

*This detail is for general informational purposes only. The project design professional determines, in its sole discretion, whether this detail or a functionally equivalent detail is best suited for the project with respect to any architecture, engineering, and design requirements, including any local building code requirements. If this document is not reviewed and the product is not approved for use by a licensed design professional, the customer agrees that the detail may contain substantive flaws requiring correction, and hereby releases Tremco CPG Inc. from any and all liability related to the design and installation of the product. This detail is subject to change without notice. Contact Tremco to ensure you have the most recent version.*

**Non-Combustible Construction - Intermediate Floor**



Detail: Nudura 12" (305mm) Form Unit, Hollow Core Precast Slab, Intermediate Floor Connection, Exterior Non-Bearing Wall Detail, Brick Veneer Finish		
Drawn by: TVC	Checked by: KS	Scale: 1:8
Revision #: 04	Revised by: KAB	Date: 3/13/2024

File Name:  
D12A05



NUDURA 12" (305mm)  
STANDARD FORM UNIT

WET SET DOWELS TO MATCH  
VERTICAL REINFORCEMENT  
BETWEEN POUR OR AS  
SPECIFIED

TREMCO EXOAIR 230 OR  
FUNCTIONAL EQUIVALENT

V-CLIP WALL PANEL ANCHOR

EXTERIOR FINISH AS SPECIFIED

FORM PANELS c/w INSERT  
WEBS- CUT TO SUIT FLOOR  
CONNECTION- ADDITIONAL  
FORM SUPPORT AS  
REQUIRED

HORIZ/VERT REINFORCEMENT  
AS PER CODE OR AS  
SPECIFIED (SEE NOTE 1)

MIN. 1/2" (13mm) GYPSUM  
BOARD

FINISHED CONCRETE  
TOPPING

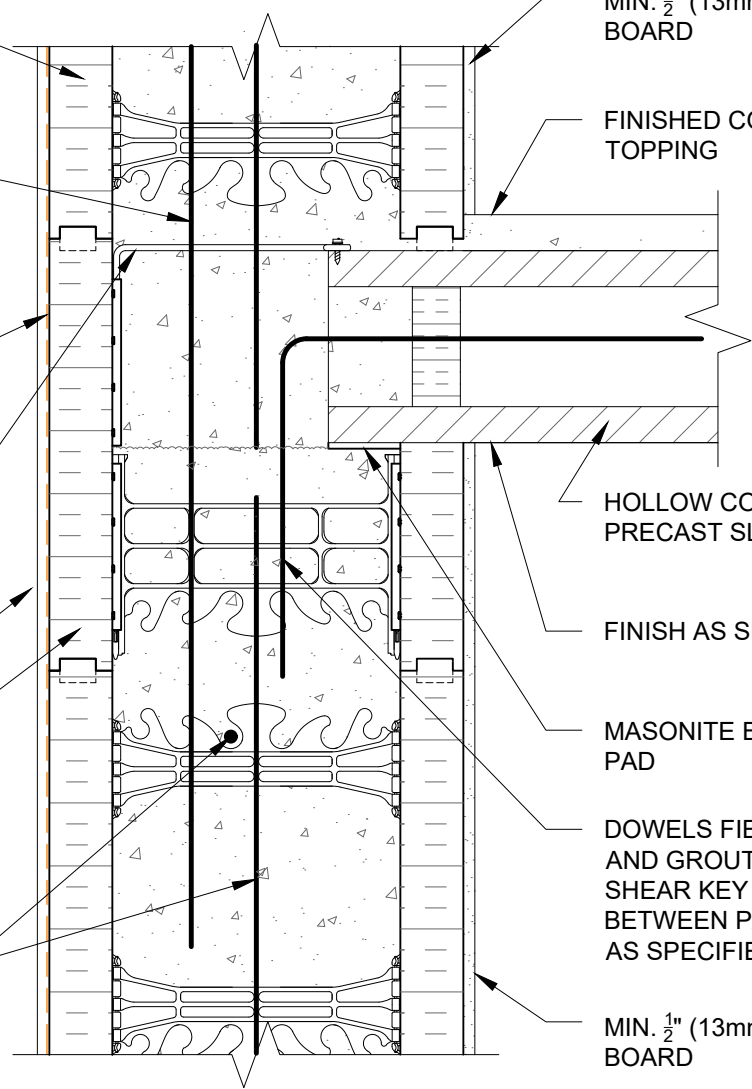
HOLLOW CORE  
PRECAST SLAB

FINISH AS SPECIFIED

MASONITE BEARING  
PAD

DOWELS FIELD BENT  
AND GROUTED INTO  
SHEAR KEY JOINT  
BETWEEN PANELS  
AS SPECIFIED

MIN. 1/2" (13mm) GYPSUM  
BOARD



NOTES:  
1) FOR OPTIMAL REINFORCEMENT PLACEMENT IN THE NUDURA FORM,  
SPACING OF HORIZONTAL REINFORCEMENT TO BE SPECIFIED AT 18"  
(457mm) O.C. AND VERTICAL REINFORCEMENT TO BE SPECIFIED AT  
MULTIPLES OF 8" (203mm) O.C. REFER TO NUDURA REINFORCEMENT  
PLACEMENT DETAILS.

*This detail is for general informational purposes only. The project design professional determines, in its sole discretion, whether this detail or a functionally equivalent detail is best suited for the project with respect to any architecture, engineering, and design requirements, including any local building code requirements. If this document is not reviewed and the product is not approved for use by a licensed design professional, the customer agrees that the detail may contain substantive flaws requiring correction, and hereby releases Tremco CPG Inc. from any and all liability related to the design and installation of the product. This detail is subject to change without notice. Contact Tremco to ensure you have the most recent version.*

**Non-Combustible Construction - Intermediate Floor**

Detail: Nudura 12" (305mm) Form Unit, Hollow Core Precast Slab, Intermediate Floor Connection, Exterior Bearing Wall Detail, Exterior Finish As Specified			File Name:
Drawn by: TVC	Checked by: KS	Scale: 1:8	D12A08
Revision #: 04	Revised by: KAB	Date: 3/13/2024	



NUDURA 12" (305mm)  
STANDARD FORM UNIT

MIN. 1/2" (13mm) GYPSUM  
BOARD

V-CLIP WALL PANEL ANCHOR

FINISHED CONCRETE  
TOPPING

DOWELS BENT AND GROUTED  
INTO HOLLOW CORE PRECAST  
PANELS AS SPECIFIED

TREMCO EXOAIR 230 OR  
FUNCTIONAL EQUIVALENT

HOLLOW CORE  
PRECAST SLAB

EXTERIOR FINISH AS  
SPECIFIED

FINISH AS SPECIFIED

FORM PANELS c/w INSERT  
WEBS- CUT TO SUIT FLOOR  
CONNECTION- ADDITIONAL  
FORM SUPPORT AS  
REQUIRED

WET SET DOWELS TO  
MATCH VERTICAL  
REINFORCEMENT  
BETWEEN POUR OR  
AS SPECIFIED

HORIZ/VERT REINFORCEMENT  
AS PER CODE OR AS SPECIFIED  
(SEE NOTE 1)

MIN. 1/2" (13mm) GYPSUM  
BOARD

NOTES:  
1) FOR OPTIMAL REINFORCEMENT PLACEMENT IN THE NUDURA FORM,  
SPACING OF HORIZONTAL REINFORCEMENT TO BE SPECIFIED AT 18"  
(457mm) O.C. AND VERTICAL REINFORCEMENT TO BE SPECIFIED AT  
MULTIPLES OF 8" (203mm) O.C. REFER TO NUDURA REINFORCEMENT  
PLACEMENT DETAILS.

*This detail is for general informational purposes only. The project design professional determines, in its sole discretion, whether this detail or a functionally equivalent detail is best suited for the project with respect to any architecture, engineering, and design requirements, including any local building code requirements. If this document is not reviewed and the product is not approved for use by a licensed design professional, the customer agrees that the detail may contain substantive flaws requiring correction, and hereby releases Tremco CPG Inc. from any and all liability related to the design and installation of the product. This detail is subject to change without notice. Contact Tremco to ensure you have the most recent version.*

**Non-Combustible Construction - Intermediate Floor**



Detail: Nudura 12" (305mm) Form Unit, Hollow Core Precast Slab, Intermediate Floor Connection, Exterior Non-Bearing Wall Detail, Exterior Finish As Specified		
Drawn by: TVC	Checked by: KS	Scale: 1:8
Revision #: 04	Revised by: KAB	Date: 3/13/2024

File Name:  
D12A09



NUDURA 12" (305mm)  
STANDARD FORM UNIT

TREMCO EXOAIR 230 OR  
FUNCTIONAL EQUIVALENT

WET SET DOWELS TO  
MATCH VERTICAL  
REINFORCEMENT  
BETWEEN POUR OR  
AS SPECIFIED

HORIZ/VERT  
REINFORCEMENT AS PER  
CODE OR AS SPECIFIED  
(SEE NOTE 1)

BRICK VENEER c/w  
1" (25mm) AIR SPACE  
AND BRICK TIES

FORM PANELS c/w INSERT  
WEBS- CUT TO SUIT FLOOR  
CONNECTION- ADDITIONAL  
FORM SUPPORT AS REQUIRED

ALLOW FLOOR SLAB TO REST  
ON TO BEARING WALL  
CONCRETE

EPS FOAM REMOVED AT JOIST  
LOCATIONS ONLY TO ALLOW  
JOIST PLACEMENT

PROPRIETARY STEEL  
JOIST FLOOR SYSTEM

CEILING FINISH AS PER STEEL JOIST  
MANUFACTURERS SPECIFICATION  
(SEE NOTE 2)

MIN. 1/2" (13mm) GYPSUM BOARD

**NOTES:**

1) FOR OPTIMAL REINFORCEMENT PLACEMENT IN THE NUDURA FORM, SPACING OF HORIZONTAL REINFORCEMENT TO BE SPECIFIED AT 18" (457mm) O.C. AND VERTICAL REINFORCEMENT TO BE SPECIFIED AT MULTIPLES OF 8" (203mm) O.C. REFER TO NUDURA REINFORCEMENT PLACEMENT DETAILS.

2) WHERE GYPSUM BOARD IS REQUIRED TO COMPLETE FIRE RATED ASSEMBLY, EPS FOAM KERF CUT TO ENABLE CEILING FINISH TO PROVIDE THERMAL BARRIER CONTACT TO CONCRETE)

*This detail is for general informational purposes only. The project design professional determines, in its sole discretion, whether this detail or a functionally equivalent detail is best suited for the project with respect to any architecture, engineering, and design requirements, including any local building code requirements. If this document is not reviewed and the product is not approved for use by a licensed design professional, the customer agrees that the detail may contain substantive flaws requiring correction, and hereby releases Tremco CPG Inc. from any and all liability related to the design and installation of the product. This detail is subject to change without notice. Contact Tremco to ensure you have the most recent version.*

**Non-Combustible Construction - Intermediate Floor**



Detail: Nudura 12" (305mm) Form Unit, Steel Joist Floor System, Intermediate Floor Connection, Exterior Bearing Wall, Brick Veneer Finish		
Drawn by: TVC	Checked by: KS	Scale: 1:8
Revision #: 04	Revised by: KAB	Date: 3/13/2024

File Name:  
D12B03



NUDURA 12" (305mm)  
STANDARD FORM UNIT

TREMCO EXOAIR 230 OR  
FUNCTIONAL EQUIVALENT

WET SET DOWELS TO  
MATCH VERTICAL  
REINFORCEMENT  
BETWEEN POUR OR  
AS SPECIFIED

HORIZ/VERT REINFORCEMENT  
AS PER CODE OR AS SPECIFIED  
(SEE NOTE 1)

BRICK VENEER c/w  
1" (25mm) AIR  
SPACE AND BRICK  
TIES

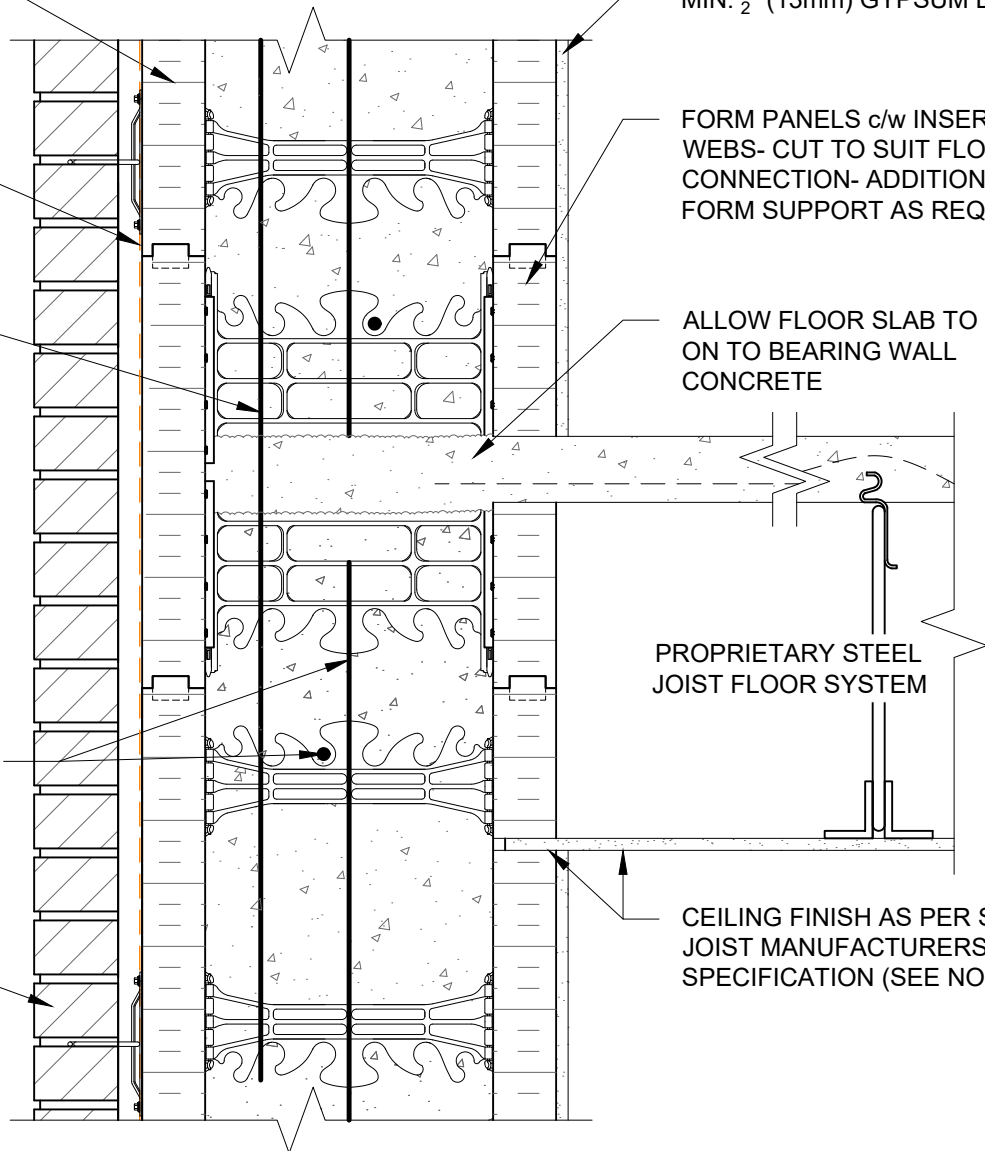
MIN. 1/2" (13mm) GYPSUM BOARD

FORM PANELS c/w INSERT  
WEBS- CUT TO SUIT FLOOR  
CONNECTION- ADDITIONAL  
FORM SUPPORT AS REQUIRED

ALLOW FLOOR SLAB TO REST  
ON TO BEARING WALL  
CONCRETE

PROPRIETARY STEEL  
JOIST FLOOR SYSTEM

CEILING FINISH AS PER STEEL  
JOIST MANUFACTURERS  
SPECIFICATION (SEE NOTE 2)



NOTES:

1) FOR OPTIMAL REINFORCEMENT PLACEMENT IN THE NUDURA FORM, SPACING OF HORIZONTAL REINFORCEMENT TO BE SPECIFIED AT 18" (457mm) O.C. AND VERTICAL REINFORCEMENT TO BE SPECIFIED AT MULTIPLES OF 8" (203mm) O.C. REFER TO NUDURA REINFORCEMENT PLACEMENT DETAILS.

2) WHERE GYPSUM BOARD IS REQUIRED TO COMPLETE FIRE RATED ASSEMBLY, EPS FOAM KERF CUT TO ENABLE CEILING FINISH TO PROVIDE THERMAL BARRIER CONTACT TO CONCRETE)

*This detail is for general informational purposes only. The project design professional determines, in its sole discretion, whether this detail or a functionally equivalent detail is best suited for the project with respect to any architecture, engineering, and design requirements, including any local building code requirements. If this document is not reviewed and the product is not approved for use by a licensed design professional, the customer agrees that the detail may contain substantive flaws requiring correction, and hereby releases Tremco CPG Inc. from any and all liability related to the design and installation of the product. This detail is subject to change without notice. Contact Tremco to ensure you have the most recent version.*

**Non-Combustible Construction - Intermediate Floor**

Detail: Nudura 12" (305mm) Form Unit, Steel Joist Floor System, Intermediate Floor  
Connection, Exterior Side Wall, Brick Veneer Finish

File Name:

Drawn by: TVC

Checked by: KS

Scale: 1:8

D12B04

Revision #: 04

Revised by: KAB

Date: 3/13/2024



Nudura Technical Support: 866-468-6299  
International: +1 705-726-9499

www.tremcocpg.com



Construction Products Group

NUDURA 12" (305mm)  
STANDARD FORM UNIT

TREMCO EXOAIR 230 OR  
FUNCTIONAL EQUIVALENT

WET SET DOWELS TO MATCH  
VERTICAL REINFORCEMENT  
BETWEEN POUR OR AS  
SPECIFIED

EXTERIOR FINISH  
AS SPECIFIED

HORIZ/VERT REINFORCEMENT  
AS PER CODE OR AS SPECIFIED  
(SEE NOTE 1)

MIN. 1/2" (13mm) GYPSUM BOARD

FORM PANELS c/w INSERT  
WEBS- CUT TO SUIT FLOOR  
CONNECTION- ADDITIONAL  
FORM SUPPORT AS REQUIRED

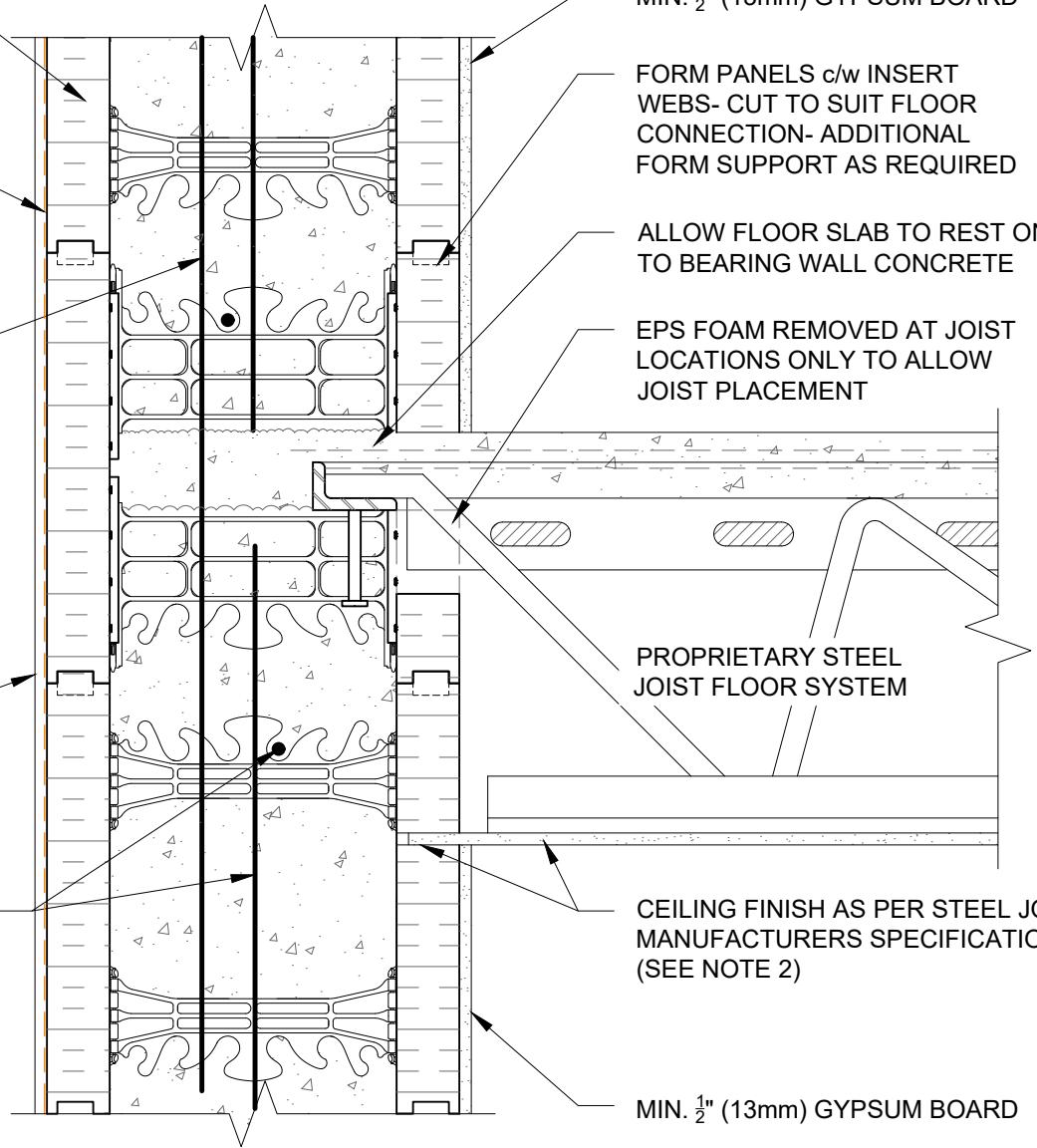
ALLOW FLOOR SLAB TO REST ON  
TO BEARING WALL CONCRETE

EPS FOAM REMOVED AT JOIST  
LOCATIONS ONLY TO ALLOW  
JOIST PLACEMENT

PROPRIETARY STEEL  
JOIST FLOOR SYSTEM

CEILING FINISH AS PER STEEL JOIST  
MANUFACTURERS SPECIFICATION  
(SEE NOTE 2)

MIN. 1/2" (13mm) GYPSUM BOARD



NOTES:

1) FOR OPTIMAL REINFORCEMENT PLACEMENT IN THE NUDURA FORM, SPACING OF HORIZONTAL REINFORCEMENT TO BE SPECIFIED AT 18" (457mm) O.C. AND VERTICAL REINFORCEMENT TO BE SPECIFIED AT MULTIPLES OF 8" (203mm) O.C. REFER TO NUDURA REINFORCEMENT PLACEMENT DETAILS.

2) WHERE GYPSUM BOARD IS REQUIRED TO COMPLETE FIRE RATED ASSEMBLY, EPS FOAM KERF CUT TO ENABLE CEILING FINISH TO PROVIDE THERMAL BARRIER CONTACT TO CONCRETE)

*This detail is for general informational purposes only. The project design professional determines, in its sole discretion, whether this detail or a functionally equivalent detail is best suited for the project with respect to any architecture, engineering, and design requirements, including any local building code requirements. If this document is not reviewed and the product is not approved for use by a licensed design professional, the customer agrees that the detail may contain substantive flaws requiring correction, and hereby releases Tremco CPG Inc. from any and all liability related to the design and installation of the product. This detail is subject to change without notice. Contact Tremco to ensure you have the most recent version.*

**Non-Combustible Construction - Intermediate Floor**



Detail: Nudura 12" (305mm) Form Unit, Steel Joist Floor System, Intermediate Floor Connection, Exterior Bearing Wall, Exterior Finish As Specified		
Drawn by: TVC	Checked by: KS	Scale: 1:8
Revision #: 04	Revised by: KAB	Date: 3/13/2024

File Name:

D12B05



NUDURA 12" (305mm)  
STANDARD FORM UNIT

TREMCO EXOAIR 230 OR  
FUNCTIONAL EQUIVALENT

WET SET DOWELS TO  
MATCH VERTICAL  
REINFORCEMENT  
BETWEEN POUR OR AS  
SPECIFIED

EXTERIOR FINISH AS  
SPECIFIED

HORIZ/VERT REINFORCEMENT  
AS PER CODE OR AS SPECIFIED  
(SEE NOTE 1)

MIN. 1/2" (13mm) GYPSUM BOARD

FORM PANELS c/w INSERT  
WEBS- CUT TO SUIT FLOOR  
CONNECTION- ADDITIONAL  
FORM SUPPORT AS REQUIRED

ALLOW FLOOR SLAB TO REST  
ON TO BEARING WALL  
CONCRETE

PROPRIETARY STEEL  
JOIST FLOOR SYSTEM

CEILING FINISH AS PER STEEL  
JOIST MANUFACTURERS  
SPECIFICATION (SEE NOTE 2)

NOTES:

1) FOR OPTIMAL REINFORCEMENT PLACEMENT IN THE NUDURA FORM, SPACING OF HORIZONTAL REINFORCEMENT TO BE SPECIFIED AT 18" (457mm) O.C. AND VERTICAL REINFORCEMENT TO BE SPECIFIED AT MULTIPLES OF 8" (203mm) O.C. REFER TO NUDURA REINFORCEMENT PLACEMENT DETAILS.

2) WHERE GYPSUM BOARD IS REQUIRED TO COMPLETE FIRE RATED ASSEMBLY, EPS FOAM KERF CUT TO ENABLE CEILING FINISH TO PROVIDE THERMAL BARRIER CONTACT TO CONCRETE)

*This detail is for general informational purposes only. The project design professional determines, in its sole discretion, whether this detail or a functionally equivalent detail is best suited for the project with respect to any architecture, engineering, and design requirements, including any local building code requirements. If this document is not reviewed and the product is not approved for use by a licensed design professional, the customer agrees that the detail may contain substantive flaws requiring correction, and hereby releases Tremco CPG Inc. from any and all liability related to the design and installation of the product. This detail is subject to change without notice. Contact Tremco to ensure you have the most recent version.*

**Non-Combustible Construction - Intermediate Floor**



Nudura Technical Support: 866-468-6299  
International: +1 705-726-9499

Detail: Nudura 12" (305mm) Form Unit, Steel Joist Floor System, Intermediate Floor  
Connection, Exterior Non-Bearing Wall, Exterior Finish As Specified

Drawn by: TVC

Checked by: KS

Scale: 1:8

Revision #: 04

Revised by: KAB

Date: 3/13/2024

File Name:

D12B06



Construction Products Group

www.tremcocpg.com



FORM PANELS c/w INSERT WEBS- CUT TO SUIT FLOOR CONNECTION- ADDITIONAL FORM SUPPORT AS REQUIRED

TREMCO EXOAIR 230 OR FUNCTIONAL EQUIVALENT

WET SET DOWELS FIELD BENT INTO SLAB AS SPECIFIED

U BRACKET ANCHOR INSERT

EXTERIOR FINISH AS SPECIFIED

WET SET DOWELS TO MATCH VERTICAL REINFORCEMENT BETWEEN POUR OR AS SPECIFIED

HORIZ/VERT REINFORCEMENT AS PER CODE OR AS SPECIFIED

GYPSUM BOARD FINISHED/FIRE STOP INSTALLED AT JOISTS AS PER CODE

COMPOSITE STEEL DECK-SLAB AND REINFORCEMENT AS SPECIFIED

OWSJ

INTERIOR INSULATION REMOVED AT JOIST LOCATIONS

MIN. 1/2" (13mm) GYPSUM BOARD

NUDURA 12" (305mm) STANDARD FORM UNIT

NOTES:  
1) FOR OPTIMAL REINFORCEMENT PLACEMENT IN THE NUDURA FORM, SPACING OF HORIZONTAL REINFORCEMENT TO BE SPECIFIED AT 18" (457mm) O.C. AND VERTICAL REINFORCEMENT TO BE SPECIFIED AT MULTIPLES OF 8" (203mm) O.C. REFER TO NUDURA REINFORCEMENT PLACEMENT DETAILS.

*This detail is for general informational purposes only. The project design professional determines, in its sole discretion, whether this detail or a functionally equivalent detail is best suited for the project with respect to any architecture, engineering, and design requirements, including any local building code requirements. If this document is not reviewed and the product is not approved for use by a licensed design professional, the customer agrees that the detail may contain substantive flaws requiring correction, and hereby releases Tremco CPG Inc. from any and all liability related to the design and installation of the product. This detail is subject to change without notice. Contact Tremco to ensure you have the most recent version.*

**Non-Combustible Construction - Intermediate Floor**



Detail: Nudura 12" (305mm) Form Unit, Composite Steel Deck-Slab Steel Joist On Ext. Bearing Wall, Intermediate Floor Connection, Exterior Finish As Specified

File Name:

Drawn by: TVC

Checked by: KS

Scale: 1:8

D12C06

Revision #: 05

Revised by: KAB

Date: 3/13/2024

www.tremcocpg.com



NUDURA 12" (305mm)  
STANDARD FORM UNIT

HORIZ/VERT REINFORCEMENT  
AS PER CODE OR AS SPECIFIED  
(SEE NOTE 1)

FORM PANELS c/w INSERT  
WEBS- CUT TO SUIT  
FLOOR CONNECTION-  
ADDITIONAL FORM  
SUPPORT AS REQUIRED

TREMCO EXOAIR 230 OR  
FUNCTIONAL EQUIVALENT

WET SET DOWELS FIELD  
BENT INTO SLAB AS  
SPECIFIED

EXTERIOR FINISH  
AS SPECIFIED

WET SET DOWELS TO MATCH  
VERTICAL REINFORCEMENT  
BETWEEN POUR OR AS  
SPECIFIED

MIN.  $\frac{1}{2}$ " (13mm) GYPSUM  
BOARD

STEEL DECK SUPPORT  
WELDING ANCHOR INSERT

COMPOSITE STEEL  
DECK-SLAB AND  
REINFORCEMENT  
AS SPECIFIED

INTERIOR INSULATION TO  
BE DISCONTINUOUS AT  
FLOOR LINES

OWSJ

MINIMUM  $\frac{1}{32}$ " (0.8mm) x  
 $2\frac{1}{2}$ " (63.5mm) GALVANIZED  
STEEL CHANNEL CAP TO  
PROVIDE THERMAL  
BARRIER PROTECTION

NOTES:

1) FOR OPTIMAL REINFORCEMENT PLACEMENT IN THE NUDURA FORM, SPACING OF HORIZONTAL REINFORCEMENT TO BE SPECIFIED AT 18" (457mm) O.C. AND VERTICAL REINFORCEMENT TO BE SPECIFIED AT MULTIPLES OF 8" (203mm) O.C. REFER TO NUDURA REINFORCEMENT PLACEMENT DETAILS.

*This detail is for general informational purposes only. The project design professional determines, in its sole discretion, whether this detail or a functionally equivalent detail is best suited for the project with respect to any architecture, engineering, and design requirements, including any local building code requirements. If this document is not reviewed and the product is not approved for use by a licensed design professional, the customer agrees that the detail may contain substantive flaws requiring correction, and hereby releases Tremco CPG Inc. from any and all liability related to the design and installation of the product. This detail is subject to change without notice. Contact Tremco to ensure you have the most recent version.*

**Non-Combustible Construction - Intermediate Floor**

Detail: Nudura 12" (305mm) Form Unit, Composite Steel Deck-Slab Steel Joist On Side Wall, Intermediate Floor Connection, Exterior Finish As Specified

File Name:

Drawn by: TVC

Checked by: KS

Scale: 1:8

D12C07

Revision #: 05

Revised by: KAB

Date: 3/13/2024



Nudura Technical Support: 866-468-6299  
International: +1 705-726-9499

www.tremcocpg.com



Construction Products Group

BRICK VENEER c/w 1" (25mm)  
AIR SPACE AND BRICK TIES

TREMCO EXOAIR 230 OR  
FUNCTIONAL EQUIVALENT

FORM PANELS c/w INSERT  
WEBS- CUT TO SUIT  
FLOOR CONNECTION-  
ADDITIONAL FORM  
SUPPORT AS REQUIRED

WET SET DOWELS  
FIELD BENT INTO SLAB  
AS SPECIFIED

U BRACKET ANCHOR INSERT

WET SET DOWELS TO MATCH  
VERTICAL REINFORCEMENT  
BETWEEN POUR OR AS  
SPECIFIED

HORIZ/VERT REINFORCEMENT  
AS PER CODE OR AS SPECIFIED  
(SEE NOTE 1)

NUDURA 12" (305mm)  
STANDARD FORM UNIT

GYPSUM BOARD  
FINISHED/FIRE STOP  
INSTALLED AT JOISTS  
AS PER CODE

COMPOSITE STEEL DECK-SLAB  
AND REINFORCEMENT AS  
SPECIFIED

OWSJ

INTERIOR INSULATION REMOVED  
AT JOIST LOCATIONS

MIN. 1/2" (13mm) GYPSUM BOARD

NOTES:  
1) FOR OPTIMAL REINFORCEMENT PLACEMENT IN THE NUDURA FORM,  
SPACING OF HORIZONTAL REINFORCEMENT TO BE SPECIFIED AT 18"  
(457mm) O.C. AND VERTICAL REINFORCEMENT TO BE SPECIFIED AT  
MULTIPLES OF 8" (203mm) O.C. REFER TO NUDURA REINFORCEMENT  
PLACEMENT DETAILS.

*This detail is for general informational purposes only. The project design professional determines, in its sole discretion, whether this detail or a functionally equivalent detail is best suited for the project with respect to any architecture, engineering, and design requirements, including any local building code requirements. If this document is not reviewed and the product is not approved for use by a licensed design professional, the customer agrees that the detail may contain substantive flaws requiring correction, and hereby releases Tremco CPG Inc. from any and all liability related to the design and installation of the product. This detail is subject to change without notice. Contact Tremco to ensure you have the most recent version.*

**Non-Combustible Construction - Intermediate Floor**

Detail: Nudura 12" (305mm) Form Unit, Composite Steel Deck-Slab, Steel Joists On  
Ext Bearing Wall, Intermediate Floor Connection, Brick Veneer Finish

Drawn by: TVC

Checked by: KS

Scale: 1:8

Revision #: 05

Revised by: KAB

Date: 3/13/2024

File Name:

D12C08



Nudura Technical Support: 866-468-6299  
International: +1 705-726-9499

www.tremcocpg.com



Construction Products Group

BRICK VENEER c/w 1" (25mm) AIR SPACE AND BRICK TIES

TREMCO EXOAIR 230 OR FUNCTIONAL EQUIVALENT

FORM PANELS c/w INSERT WEBS- CUT TO SUIT FLOOR CONNECTION- ADDITIONAL FORM SUPPORT AS REQUIRED

WET SET DOWELS FIELD BENT INTO SLAB AS SPECIFIED

HORIZ/VERT REINFORCEMENT AS PER CODE OR AS SPECIFIED (SEE NOTE 1)

NUDURA 12" (305mm) STANDARD FORM UNIT

WET SET DOWELS TO MATCH VERTICAL REINFORCEMENT BETWEEN POUR OR AS SPECIFIED

MIN. 1/2" (13mm) GYPSUM BOARD

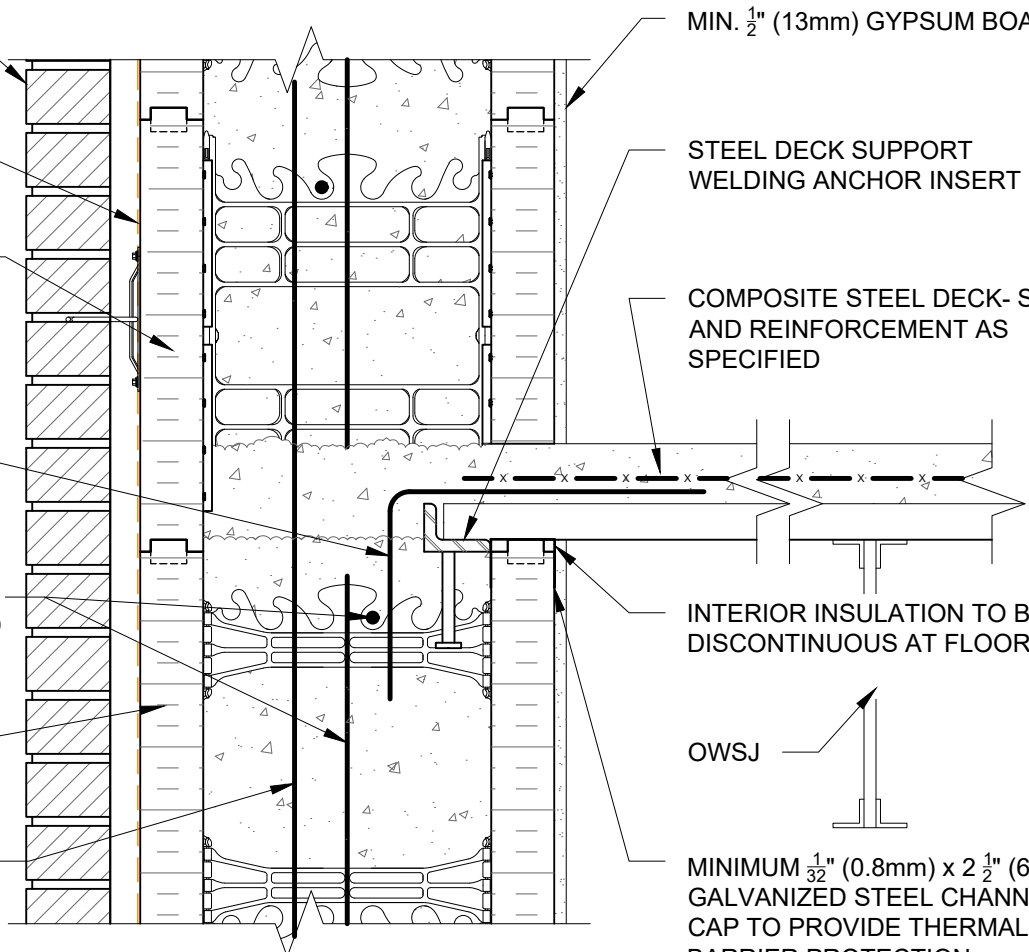
STEEL DECK SUPPORT WELDING ANCHOR INSERT

COMPOSITE STEEL DECK- SLAB AND REINFORCEMENT AS SPECIFIED

INTERIOR INSULATION TO BE DISCONTINUOUS AT FLOOR LINES

OWSJ

MINIMUM 1/32" (0.8mm) x 2 1/2" (63.5mm) GALVANIZED STEEL CHANNEL CAP TO PROVIDE THERMAL BARRIER PROTECTION



NOTES:  
 1) FOR OPTIMAL REINFORCEMENT PLACEMENT IN THE NUDURA FORM, SPACING OF HORIZONTAL REINFORCEMENT TO BE SPECIFIED AT 18" (457mm) O.C. AND VERTICAL REINFORCEMENT TO BE SPECIFIED AT MULTIPLES OF 8" (203mm) O.C. REFER TO NUDURA REINFORCEMENT PLACEMENT DETAILS.

*This detail is for general informational purposes only. The project design professional determines, in its sole discretion, whether this detail or a functionally equivalent detail is best suited for the project with respect to any architecture, engineering, and design requirements, including any local building code requirements. If this document is not reviewed and the product is not approved for use by a licensed design professional, the customer agrees that the detail may contain substantive flaws requiring correction, and hereby releases Tremco CPG Inc. from any and all liability related to the design and installation of the product. This detail is subject to change without notice. Contact Tremco to ensure you have the most recent version.*

**Non-Combustible Construction - Intermediate Floor**



Detail: Nudura 12" (305mm) Form Unit, Composite Steel Deck-Slab, Steel Joists On Side Wall, Intermediate Floor Connection, Brick Veneer Finish		
Drawn by: TVC	Checked by: KS	Scale: 1:8
Revision #: 05	Revised by: KAB	Date: 3/13/2024

File Name:  
D12C09



NUDURA 12" (305mm)  
STANDARD FORM UNIT

HORIZ/VERT REINFORCEMENT  
AS PER CODE OR AS  
SPECIFIED (SEE NOTE 1)

TREMCO EXOAIR 230 OR  
FUNCTIONAL EQUIVALENT

ADDITIONAL BRACING  
REQUIRED DURING  
FLOOR SLAB POUR

EXTERIOR FINISH AS  
SPECIFIED

WET SET DOWELS FIELD  
BENT INTO SLAB AS  
SPECIFIED

MIN. 1/2" (13mm) GYPSUM BOARD

CONCRETE SLAB

INSULATED CONCRETE  
FLOOR FORM INSTALLED  
AS PER MANUFACTURERS  
SPECIFICATIONS

THERMAL BARRIER AS PER  
FLOOR MANUFACTURERS  
SPECIFICATION

NUDURA 12" (305mm)  
HEIGHT ADJUSTER TIE

WET SET DOWELS TO MATCH  
VERTICAL REINFORCEMENT  
BETWEEN POUR OR AS  
SPECIFIED

**NOTES:**

1) FOR OPTIMAL REINFORCEMENT PLACEMENT IN THE NUDURA FORM, SPACING OF HORIZONTAL REINFORCEMENT TO BE SPECIFIED AT 18" (457mm) O.C. AND VERTICAL REINFORCEMENT TO BE SPECIFIED AT MULTIPLES OF 8" (203mm) O.C. REFER TO NUDURA REINFORCEMENT PLACEMENT DETAILS.

*This detail is for general informational purposes only. The project design professional determines, in its sole discretion, whether this detail or a functionally equivalent detail is best suited for the project with respect to any architecture, engineering, and design requirements, including any local building code requirements. If this document is not reviewed and the product is not approved for use by a licensed design professional, the customer agrees that the detail may contain substantive flaws requiring correction, and hereby releases Tremco CPG Inc. from any and all liability related to the design and installation of the product. This detail is subject to change without notice. Contact Tremco to ensure you have the most recent version.*

**Non-Combustible Construction - Intermediate Floor**



Detail: Nudura 12" (305mm) Form Unit, ICFS Connection, ICFS Resting On Form, Exterior Side Wall, Exterior Finish As Specified

Drawn by: TVC

Checked by: KS

Scale: 1:8

Revision #: 04

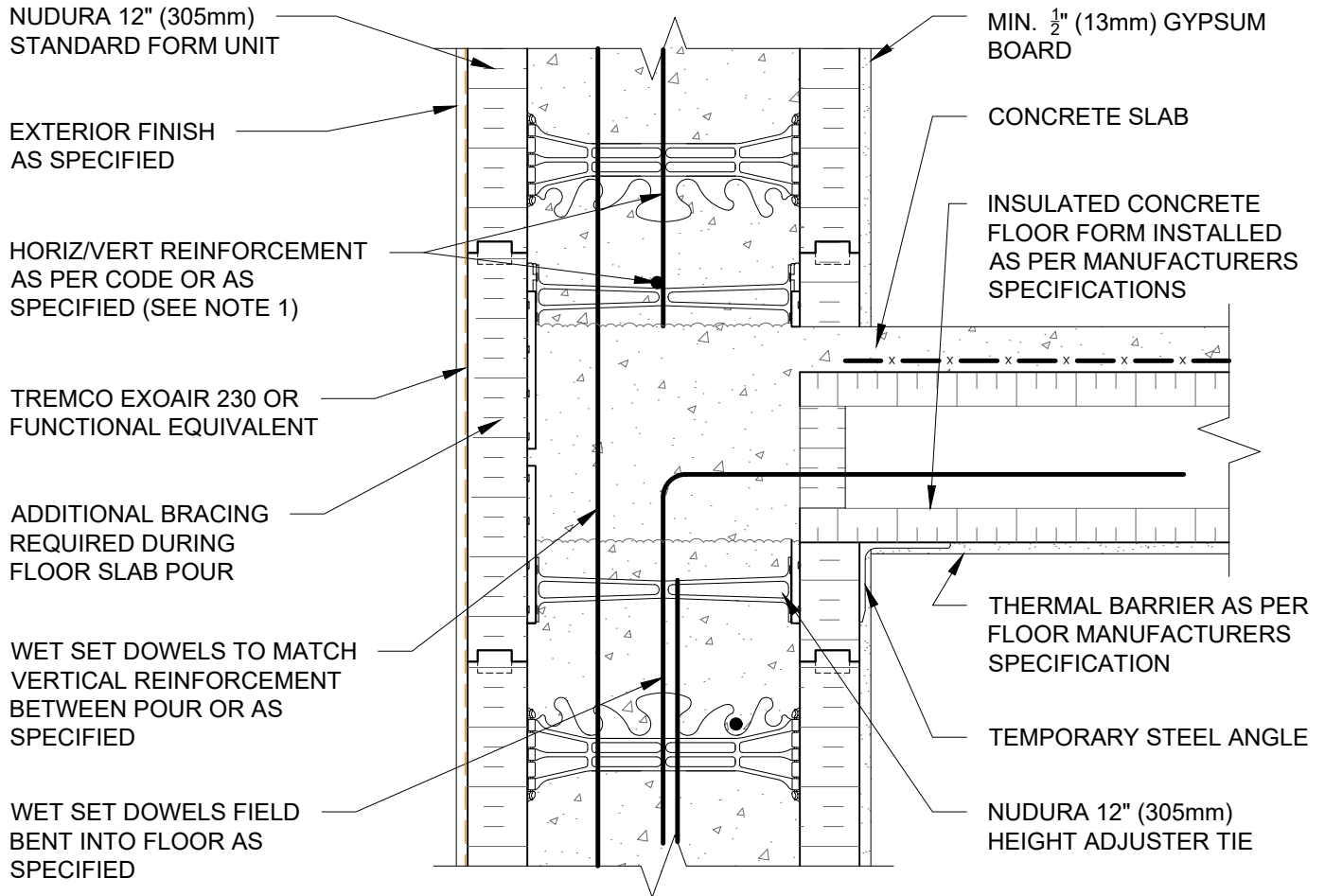
Revised by: KAB

Date: 3/13/2024

File Name:

D12D01





NOTES:  
 1) FOR OPTIMAL REINFORCEMENT PLACEMENT IN THE NUDURA FORM, SPACING OF HORIZONTAL REINFORCEMENT TO BE SPECIFIED AT 18" (457mm) O.C. AND VERTICAL REINFORCEMENT TO BE SPECIFIED AT MULTIPLES OF 8" (203mm) O.C. REFER TO NUDURA REINFORCEMENT PLACEMENT DETAILS.

*This detail is for general informational purposes only. The project design professional determines, in its sole discretion, whether this detail or a functionally equivalent detail is best suited for the project with respect to any architecture, engineering, and design requirements, including any local building code requirements. If this document is not reviewed and the product is not approved for use by a licensed design professional, the customer agrees that the detail may contain substantive flaws requiring correction, and hereby releases Tremco CPG Inc. from any and all liability related to the design and installation of the product. This detail is subject to change without notice. Contact Tremco to ensure you have the most recent version.*

**Non-Combustible Construction - Intermediate Floor**



Detail: Nudura 12" (305mm) Form Unit, ICFS Connection, ICFS Resting On Form, Exterior Side Wall, Exterior Finish As Specified		
Drawn by: JN	Checked by: KS	Scale: 1:8
Revision #: 04	Revised by: KAB	Date: 3/13/2024

File Name:
D12D02



NUDURA 12" (305mm)  
STANDARD FORM UNIT

HORIZ/VERT  
REINFORCEMENT AS  
PER CODE OR  
AS SPECIFIED  
(SEE NOTE 1)

TREMCO EXOAIR 230  
OR FUNCTIONAL  
EQUIVALENT

ADDITIONAL BRACING  
REQUIRED DURING  
FLOOR SLAB POUR

WET SET DOWELS FIELD  
BENT INTO SLAB AS  
SPECIFIED

WET SET DOWELS TO  
MATCH VERTICAL  
REINFORCEMENT  
BETWEEN POUR OR AS  
SPECIFIED

BRICK VENEER c/w  
1" (25mm) AIR SPACE  
AND BRICK TIES

MIN. 1/2" (13mm) GYPSUM BOARD

CONCRETE SLAB

INSULATED CONCRETE  
FLOOR FORM INSTALLED  
AS PER MANUFACTURERS  
SPECIFICATIONS

THERMAL BARRIER AS PER  
FLOOR MANUFACTURERS  
SPECIFICATION

NUDURA 12" (305mm)  
HEIGHT ADJUSTER TIE

**NOTES:**

1) FOR OPTIMAL REINFORCEMENT PLACEMENT IN THE NUDURA FORM, SPACING OF HORIZONTAL REINFORCEMENT TO BE SPECIFIED AT 18" (457mm) O.C. AND VERTICAL REINFORCEMENT TO BE SPECIFIED AT MULTIPLES OF 8" (203mm) O.C. REFER TO NUDURA REINFORCEMENT PLACEMENT DETAILS.

*This detail is for general informational purposes only. The project design professional determines, in its sole discretion, whether this detail or a functionally equivalent detail is best suited for the project with respect to any architecture, engineering, and design requirements, including any local building code requirements. If this document is not reviewed and the product is not approved for use by a licensed design professional, the customer agrees that the detail may contain substantive flaws requiring correction, and hereby releases Tremco CPG Inc. from any and all liability related to the design and installation of the product. This detail is subject to change without notice. Contact Tremco to ensure you have the most recent version.*

**Non-Combustible Construction - Intermediate Floor**



Nudura Technical Support: 866-468-6299  
International: +1 705-726-9499

Detail: Nudura 12" (305mm) Form Unit, ICFS Connection, ICFS Resting On Form,  
Exterior Side Wall, Brick Veneer Finish

Drawn by: TVC

Checked by: KS

Scale: 1:8

Revision #: 04

Revised by: KAB

Date: 3/13/2024

File Name:

D12D03



Construction Products Group

www.tremcocpg.com

NUDURA 12" (305mm)  
STANDARD FORM UNIT

HORIZ/VERT REINFORCEMENT  
AS PER CODE OR AS  
SPECIFIED (SEE NOTE 1)

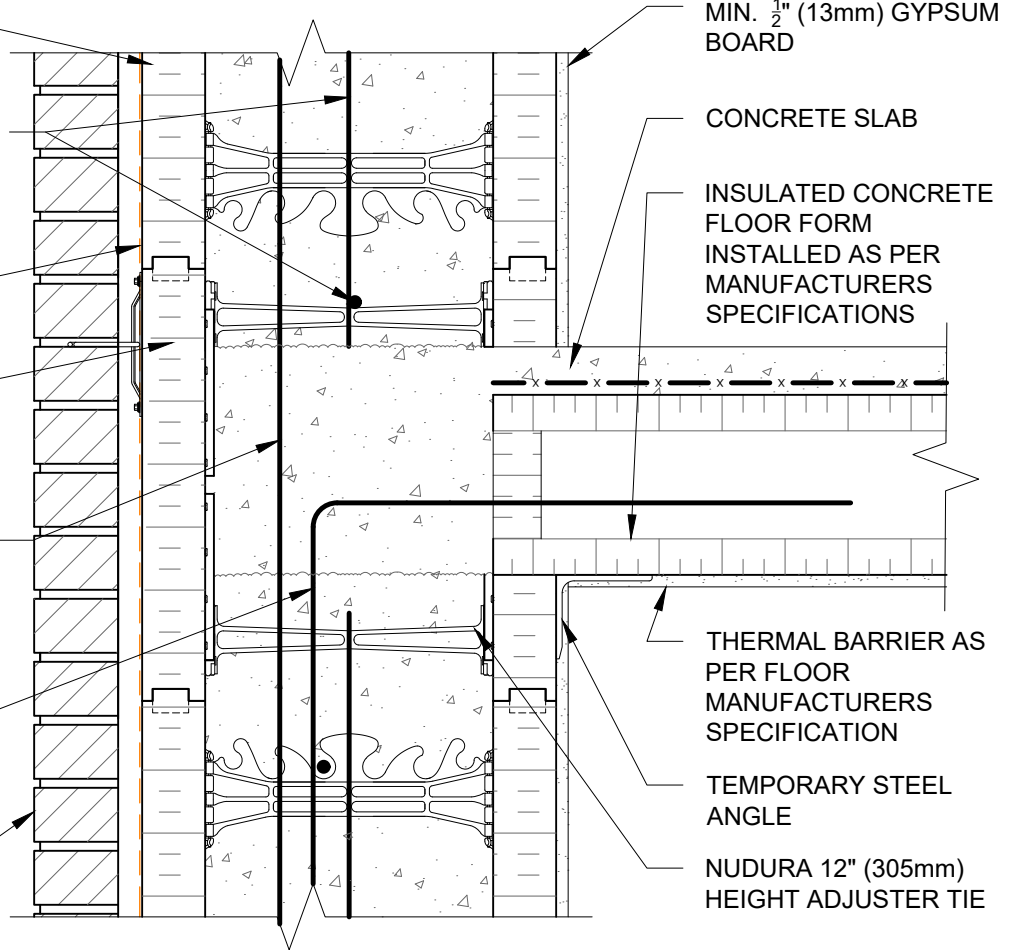
TREMCO EXOAIR 230 OR  
FUNCTIONAL EQUIVALENT

ADDITIONAL BRACING  
REQUIRED DURING  
FLOOR SLAB POUR

WET SET DOWELS TO MATCH  
VERTICAL REINFORCEMENT  
BETWEEN POUR OR AS  
SPECIFIED

WET SET DOWELS FIELD  
BENT INTO SLAB AS  
SPECIFIED

BRICK VENEER c/w 1"  
(25mm) AIR SPACE AND  
BRICK TIES



MIN. 1/2" (13mm) GYPSUM  
BOARD

CONCRETE SLAB

INSULATED CONCRETE  
FLOOR FORM  
INSTALLED AS PER  
MANUFACTURERS  
SPECIFICATIONS

THERMAL BARRIER AS  
PER FLOOR  
MANUFACTURERS  
SPECIFICATION

TEMPORARY STEEL  
ANGLE

NUDURA 12" (305mm)  
HEIGHT ADJUSTER TIE

**NOTES:**

1) FOR OPTIMAL REINFORCEMENT PLACEMENT IN THE NUDURA FORM, SPACING OF HORIZONTAL REINFORCEMENT TO BE SPECIFIED AT 18" (457mm) O.C. AND VERTICAL REINFORCEMENT TO BE SPECIFIED AT MULTIPLES OF 8" (203mm) O.C. REFER TO NUDURA REINFORCEMENT PLACEMENT DETAILS.

*This detail is for general informational purposes only. The project design professional determines, in its sole discretion, whether this detail or a functionally equivalent detail is best suited for the project with respect to any architecture, engineering, and design requirements, including any local building code requirements. If this document is not reviewed and the product is not approved for use by a licensed design professional, the customer agrees that the detail may contain substantive flaws requiring correction, and hereby releases Tremco CPG Inc. from any and all liability related to the design and installation of the product. This detail is subject to change without notice. Contact Tremco to ensure you have the most recent version.*

**Non-Combustible Construction - Intermediate Floor**

Detail: Nudura 12" (305mm) Form Unit, ICFS Connection, ICFS Resting On Form, Exterior Side Wall, Brick Veneer Finish

Drawn by: TVC

Checked by: KS

Scale: 1:8

Revision #: 04

Revised by: KAB

Date: 3/13/2024

File Name:

D12D04



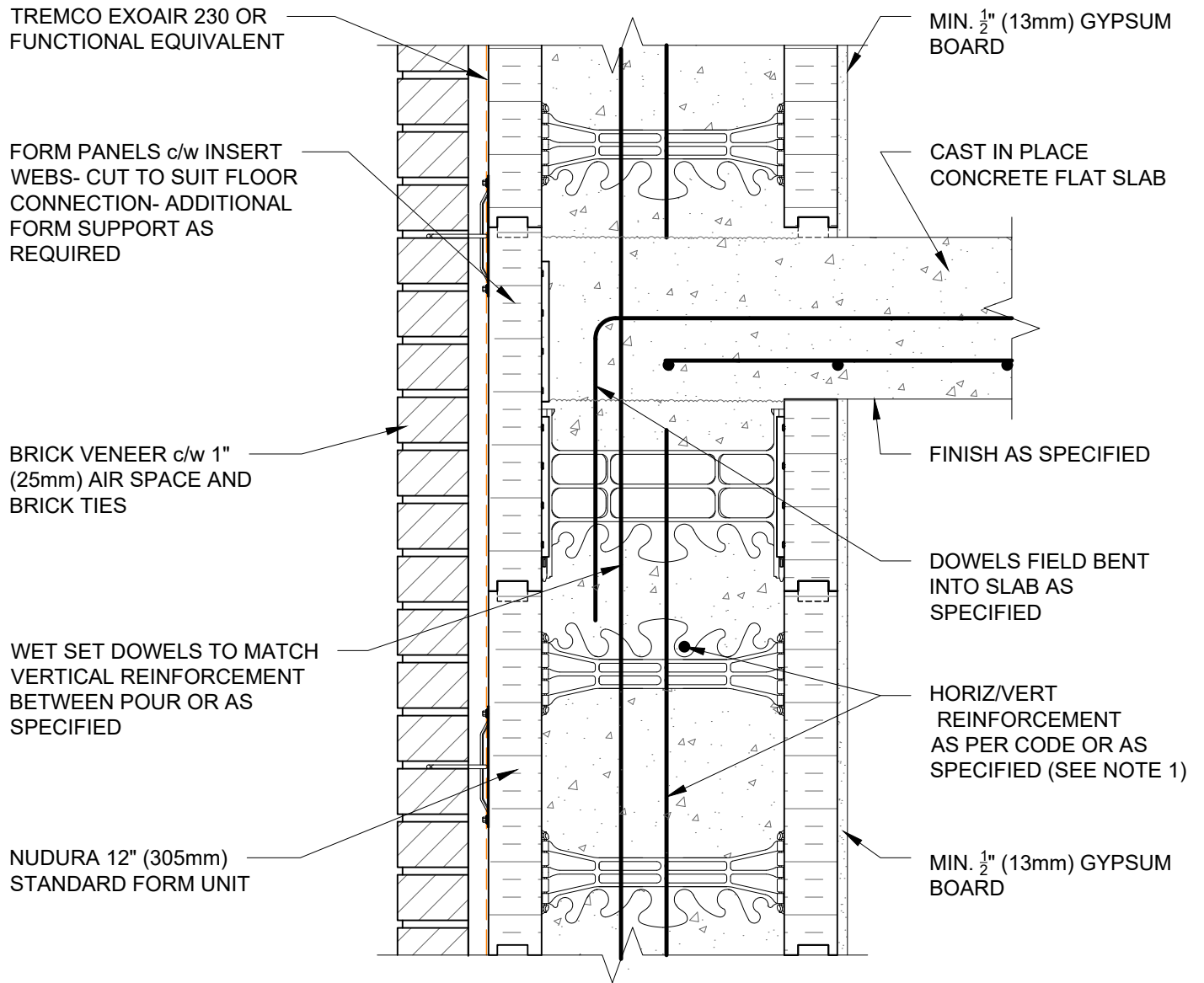
Nudura Technical Support: 866-468-6299  
International: +1 705-726-9499

www.tremcocpg.com



Construction Products Group





NOTES:  
 1) FOR OPTIMAL REINFORCEMENT PLACEMENT IN THE NUDURA FORM, SPACING OF HORIZONTAL REINFORCEMENT TO BE SPECIFIED AT 18\"/>

*This detail is for general informational purposes only. The project design professional determines, in its sole discretion, whether this detail or a functionally equivalent detail is best suited for the project with respect to any architecture, engineering, and design requirements, including any local building code requirements. If this document is not reviewed and the product is not approved for use by a licensed design professional, the customer agrees that the detail may contain substantive flaws requiring correction, and hereby releases Tremco CPG Inc. from any and all liability related to the design and installation of the product. This detail is subject to change without notice. Contact Tremco to ensure you have the most recent version.*

**Non-Combustible Construction - Intermediate Floor**



Detail: Nudura 12" (305mm) Form Unit, Concrete Flat Plate, Intermediate Floor Connection, Bearing Wall Detail, Brick Veneer Finish		
Drawn by: KS	Checked by: KS	Scale: 1:8
Revision #: 01	Revised by: KAB	Date: 3/13/2024

File Name:  
 D12E03



TREMCO EXOAIR 230 OR FUNCTIONAL EQUIVALENT

NUDURA 12" (305mm) STANDARD FORM UNIT

EXTERIOR FINISH AS SPECIFIED

WET SET DOWELS TO MATCH VERTICAL REINFORCEMENT BETWEEN POUR OR AS SPECIFIED

FORM PANELS c/w INSERT WEBS- CUT TO SUIT FLOOR CONNECTION- ADDITIONAL FORM SUPPORT AS REQUIRED

HORIZ/VERT REINFORCEMENT AS PER CODE OR AS SPECIFIED (SEE NOTE 1)

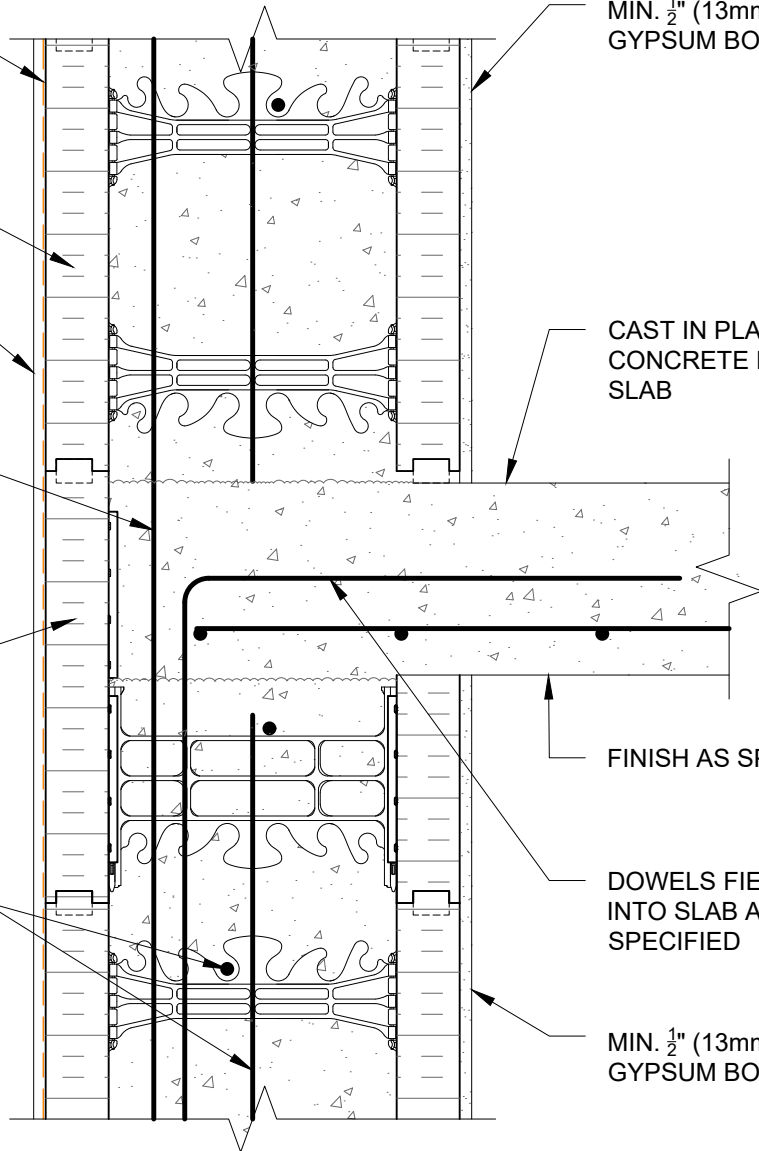
MIN. 1/2" (13mm) GYPSUM BOARD

CAST IN PLACE CONCRETE FLAT SLAB

FINISH AS SPECIFIED

DOWELS FIELD BENT INTO SLAB AS SPECIFIED

MIN. 1/2" (13mm) GYPSUM BOARD



NOTES:  
 1) FOR OPTIMAL REINFORCEMENT PLACEMENT IN THE NUDURA FORM, SPACING OF HORIZONTAL REINFORCEMENT TO BE SPECIFIED AT 18" (457mm) O.C. AND VERTICAL REINFORCEMENT TO BE SPECIFIED AT MULTIPLES OF 8" (203mm) O.C. REFER TO NUDURA REINFORCEMENT PLACEMENT DETAILS.

*This detail is for general informational purposes only. The project design professional determines, in its sole discretion, whether this detail or a functionally equivalent detail is best suited for the project with respect to any architecture, engineering, and design requirements, including any local building code requirements. If this document is not reviewed and the product is not approved for use by a licensed design professional, the customer agrees that the detail may contain substantive flaws requiring correction, and hereby releases Tremco CPG Inc. from any and all liability related to the design and installation of the product. This detail is subject to change without notice. Contact Tremco to ensure you have the most recent version.*

**Non-Combustible Construction - Intermediate Floor**



Detail: Nudura 12" (305mm) Form Unit, Concrete Flat Plate, Intermediate Floor Connection, Exterior Bearing Wall Detail, Exterior Finish As Specified		
Drawn by: KS	Checked by: KS	Scale: 1:8
Revision #: 01	Revised by: KAB	Date: 3/13/2024

File Name:  
 D12E04

